

Reed Switch specifications

Model No: LDW-101SM

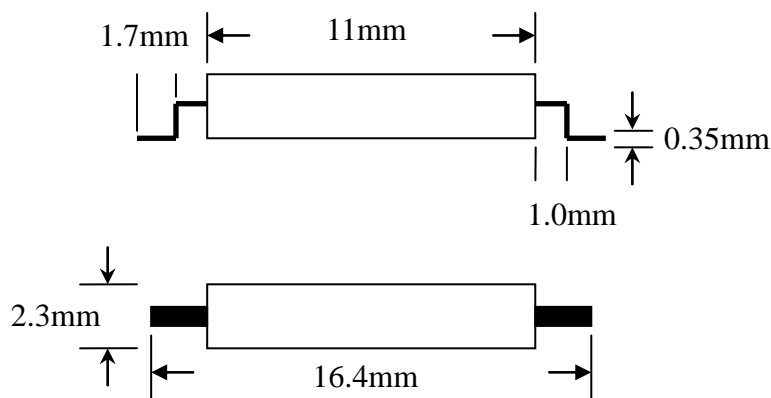
Features

- The LDW-101SM is a small single-contact reed switch designed for surface mount technology system use.

Applications

- Automotive electronic devices
- Rotation and speed monitoring
- Door and window contacts for security system
- Communication equipment
- Measurement equipment
- Telephone hook switch
- Security

Dimensions



Unit : mm

Electrical Characteristics

Contact form		SPST Form A Center gap
Contact Rating	(max.)	10 W
Switching Current	(max.)	0.5 Amp.
Carry Current	(max.)	1.0 Amp.
Switching voltage	(max.)	200 VDC
Breakdown voltage	(min.)	250 VDC
Contact, Initial Resistance	(max.)	0.12Ω
Insulation resistance	(min.)	10 ¹² Ω
Contact capacitance	(max.)	0.2 pF
Operate time including bounce	(typ.)	0.5ms
Release time	(typ.)	0.1 ms
Pull in Range		10 – 25 AT
Drop out		35 – 90%

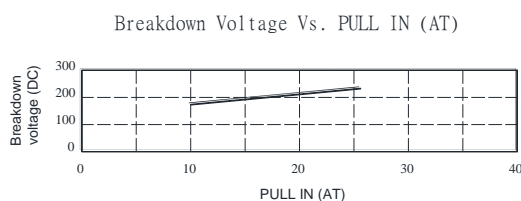
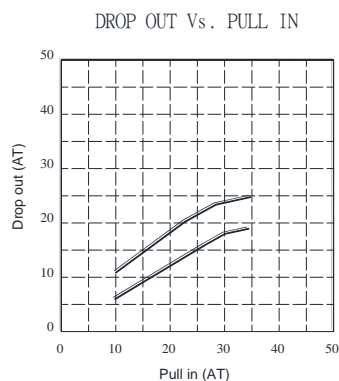
Note: 1 The specification for VA rating may be exceeded for less sensitive (High AT) switches, and should be decreased for very sensitive (Low AT) switches. Specific life testing for a particular load will be run upon request.

LDW101SM

- Breakdown voltage is measured in the presence of a radioactive ionizing source with leakage current limited to 100 microamperes.

Physical Characteristics

Operating Temperature	-40°C to +125°C
Storage Temperature	-50°C to +125°C
Vibration 10 – 2000 Hz (G ' S MAX)	50g
Shock 11ms. ½ Sine wave (G ' S MAX)	100g
Resonant Frequency (TYP.)	5 KHz
Switching Frequency (MAX.)	200 Hz



Minimum Life Expectancy

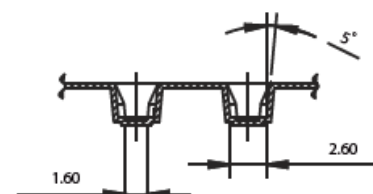
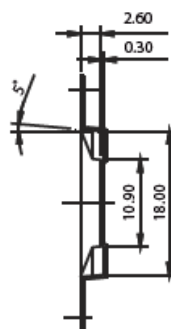
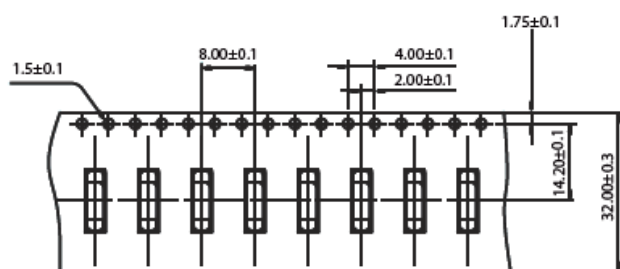
Load	5V DC 2mA	10V DC 1A	12V DC 10mA	24V DC 10mA	48V DC 100mA	70V DC 80mA
Life	100×10^6	0.5×10^6	10×10^6	2×10^6	0.5×10^6	0.5×10^6

End of Life Definition

- Contact resistance above 1 ohm.
- Failure to open (sticking).

Packaging Dimensions

Unit : mm



- Material : PS Black-Thickness : 0.35 ± 0.05 mm
- Packing Length Per Reel : 22 Meters
- Component Load Per Reel : 2500 Pcs